



Gatwick Airport Northern Runway Project

Environmental Statement

Appendix 8.10.1 – Tree Survey Report and Arboricultural Impact Assessment - Part 3

Book 5

VERSION: 1.0

DATE: MARCH 2024

Application Document Ref: 5.3

PINS Reference Number: TR020005



Key

- Red Line boundary.
- Survey boundary.
- Tree with numbered reference. Canopy spread and coloured BS5837:2012 tree quality category as shown below.
 - Tree details estimate (accessible tree)
 - Tree in off site location
- Tree group plotted with individual stem locations and numbered reference. Canopy extents coloured to match BS5837:2012 tree quality category as shown below.
- Tree or Vegetation group with numbered reference. Canopy extents coloured to match BS5837:2012 tree quality category as shown below and dashed line to show indicative stem line.
- Hedge with numbered reference. Canopy extents and coloured BS5837:2012 tree quality category as shown below and dashed line to show hedge centerline.
- Woodland with numbered reference. Canopy extents and coloured BS5837:2012 tree quality category as shown below and dashed line to show indicative tree line.

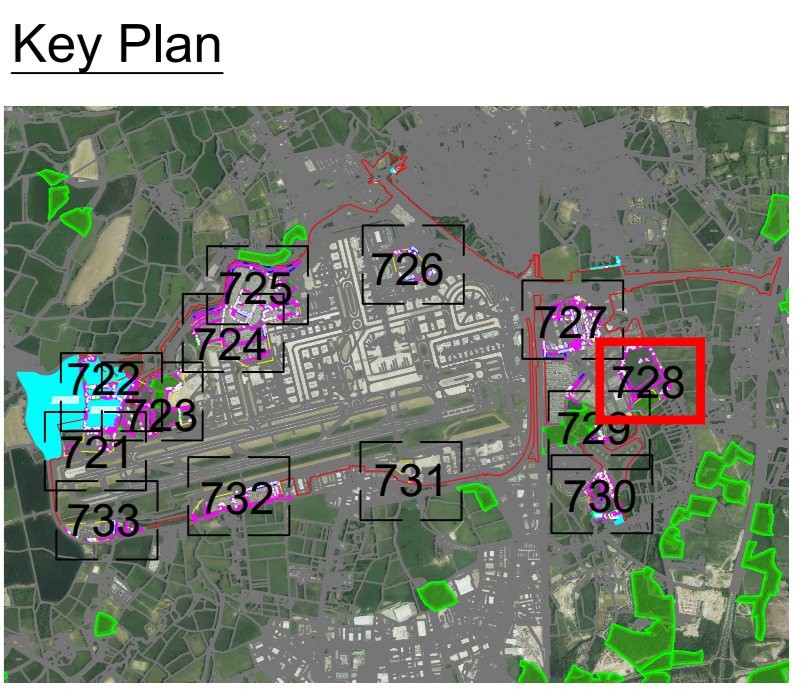
BS 5837:2012 Tree Quality Categories - Table 1

- Category A - High quality
- Category B - Moderate quality
- Category C - Low quality
- Category U - Unsuitable for retention

- Direction of first significant branch
- Root protection area (RPA). Calculated in accordance with Section 4.6 - BS5837:2012
- Veteran tree buffer (15 x stem Ø) (as per standing advice produced by Forestry England and Natural England)
- Tree protected by Tree Preservation Order. Bracketted number reference relates to the TPO Schedule.
- Designated Ancient Woodland (as per Natural England ancient woodland inventory, via open data publication)
- Ancient Woodland tree buffer (15m offset) (as per standing advice produced by Forestry England and Natural England)

NOTES:

- Refer to RPS Tree Survey Report & Schedule for further details.
- Survey based on a visual inspection from the ground and is not intended as a full arboricultural inspection.
- Plan produced in accordance with recommendations set out in BS 5837:2012 - 'Trees in Relation to design, demolition and construction'.
- Due to the legal protection afforded to breeding birds, vegetation removal should not take place during the bird nesting period; generally, although not restricted to, March - August inclusive.
- Survey based upon Aerial Photography and trees located by eye.



DOCUMENT
Environmental Statement

DRAWING TITLE
**Airport Tree Survey Plans
Appendix 8.10.1
Sheet 8 of 13**

DATE
January 2024

ORIENTATION 	DRAWING NO. 728	REVISION For ES Issue
	DRAWN BY RC	PM / CHECKED BY DC

SCALE @ A0

Reproduced from Ordnance Survey map with the permission of Ordnance Survey on behalf of the controller of Her Majesty's Stationery Office © Crown Copyright (2023). License number 0100031673, 10001998, 100048492.
© Copyright 2023 Gatwick Airport Limited. No part of this drawing is to be reproduced without prior permission of Gatwick Airport Limited.



Key

- Red Line boundary.
- Survey boundary.
- Tree with numbered reference. Canopy spread and coloured BS5837:2012 tree quality category as shown below.
 - Tree details estimate (accessible tree)
 - Tree in off site location
- Tree group plotted with individual stem locations and numbered reference. Canopy extents coloured to match BS5837:2012 tree quality category as shown below and dashed line to show indicative stem line.
- Hedge with numbered reference. Canopy extents coloured to match BS5837:2012 tree quality category as shown below and dashed line to show hedge centerline.
- Woodland with numbered reference. Canopy extents coloured to match BS5837:2012 tree quality category as shown below and dashed line to show indicative tree line.

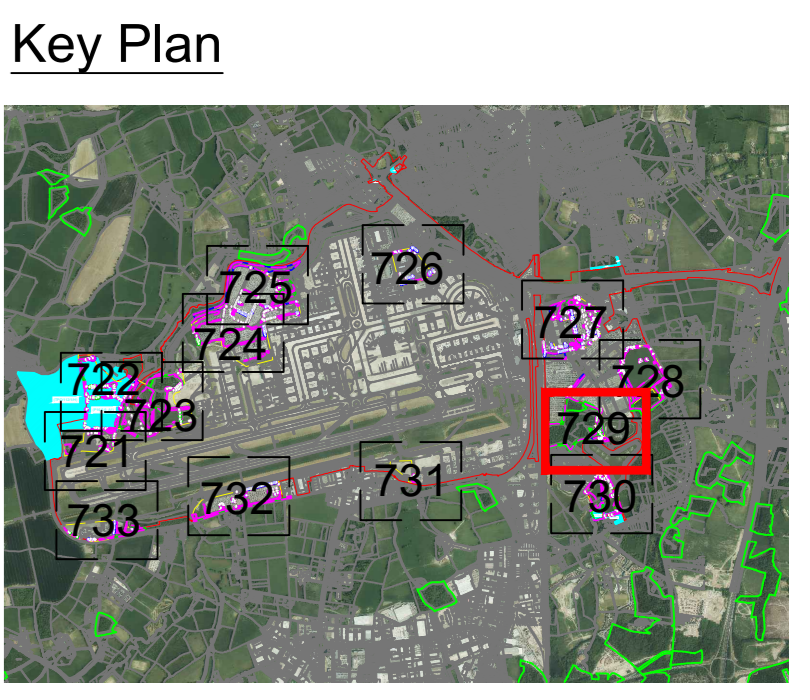
BS 5837:2012 Tree Quality Categories - Table 1

- Category A - High quality
- Category B - Moderate quality
- Category C - Low quality
- Category U - Unsuitable for retention

- Direction of first significant branch
- Root protection area (RPA). Calculated in accordance with Section 4.6 - BS5837:2012
- Veteran tree buffer (15 x stem Ø) (as per standing advice produced by Forestry England and Natural England)
- Tree protected by Tree Preservation Order. Bracketed number reference relates to the TPO Schedule.
- Designated Ancient Woodland (as per Natural England ancient woodland inventory, via open data publication)
- Ancient Woodland tree buffer (15m offset) (as per standing advice produced by Forestry England and Natural England)

NOTES:

- Refer to RPS Tree Survey Report & Schedule for further details.
- Survey based on a visual inspection from the ground and is not intended as a full arboricultural inspection.
- Plan produced in accordance with recommendations set out in BS 5837:2012 - "Trees in Relation to design, demolition and construction".
- Due to the legal protection afforded to breeding birds vegetation removal should not take place during the bird nesting period; generally, although not restricted to, March - August inclusive.
- Survey based upon Aerial Photography and trees located by eye.



DOCUMENT

Environmental Statement

DRAWING TITLE

**Airport Tree Survey Plans
Appendix 8.10.1
Sheet 9 of 13**

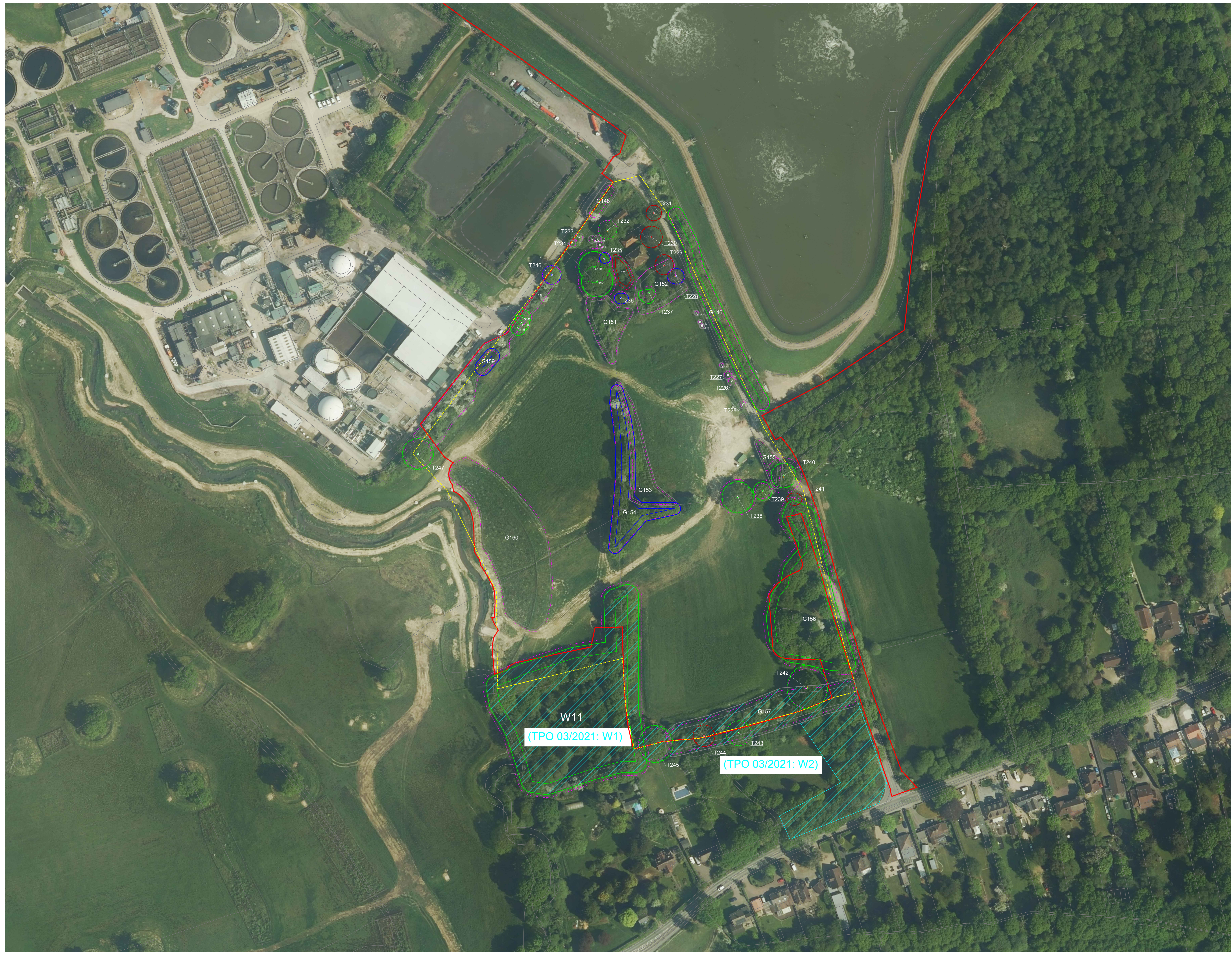
DATE

January 2024

ORIENTATION 	DRAWING NO. 729	REVISION For ES Issue
	DRAWN BY RC	PM / CHECKED BY DC

SCALE @ A0

0m 25m 50m



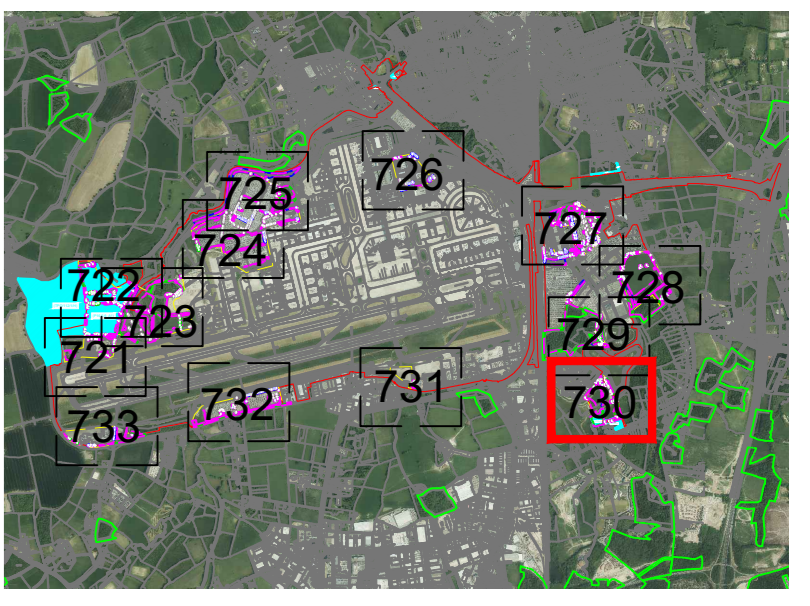
Key

- Red Line boundary.
 - Survey boundary.
 - Tree with numbered reference. Canopy spread and coloured BS5837:2012 tree quality category as shown below.
 - Tree details estimate (accessible tree)
 - Tree in off site location
 - Tree group plotted with individual stem locations and numbered reference. Canopy extents coloured to match BS5837:2012 tree quality category as shown below.
 - Tree or Vegetation group with numbered reference. Canopy extents coloured to match BS5837:2012 tree quality category as shown below and dashed line to show indicative stem line.
 - Hedge with numbered reference. Canopy extents coloured to match BS5837:2012 tree quality category as shown below and dashed line to show hedge centerline.
 - Woodland with numbered reference. Canopy extents coloured to match BS5837:2012 tree quality category as shown below and dashed line to show indicative tree line.
- BS 5837:2012 Tree Quality Categories - Table 1**
- Category A - High quality
 - Category B - Moderate quality
 - Category C - Low quality
 - Category U - Unsuitable for retention
- Direction of first significant branch
 - Root protection area (RPA). Calculated in accordance with Section 4.6 - BS5837:2012
 - Veteran tree buffer (15 x stem Ø) (as per standing advice produced by Forestry England and Natural England)
 - Tree protected by Tree Preservation Order. Bracketted number reference relates to the TPO Schedule.
 - Designated Ancient Woodland (as per Natural England ancient woodland inventory, via open data publication)
 - Ancient Woodland tree buffer (15m offset) (as per standing advice produced by Forestry England and Natural England)

NOTES:

- Refer to RPS Tree Survey Report & Schedule for further details.
- Survey based on a visual inspection from the ground and is not intended as a full arboricultural inspection.
- Plan produced in accordance with recommendations set out in BS 5837:2012 - "Trees in Relation to design, demolition and construction".
- Due to the legal protection afforded to breeding birds, vegetation removal should not take place during the bird nesting period, generally, although not restricted to March - August inclusive.
- Survey based upon Aerial Photography and trees located by eye.

Key Plan



DOCUMENT

Environmental Statement

DRAWING TITLE

Airport Tree Survey Plans
Appendix 8.10.1
Sheet 10 of 13

DATE

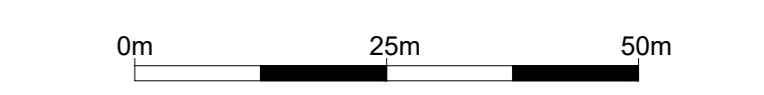
January 2024

ORIENTATION



DRAWING NO.	REVISION
730	For ES Issue
DRAWN BY RC	PM / CHECKED BY DC

SCALE @ A0



Reproduced from Ordnance Survey map with the permission of Ordnance Survey on behalf of the controller of Her Majesty's Stationery Office © Crown Copyright (2023). License number 0100031673, 10001998, 100048492.
© Copyright 2023 Gatwick Airport Limited. No part of this drawing is to be reproduced without prior permission of Gatwick Airport Limited.

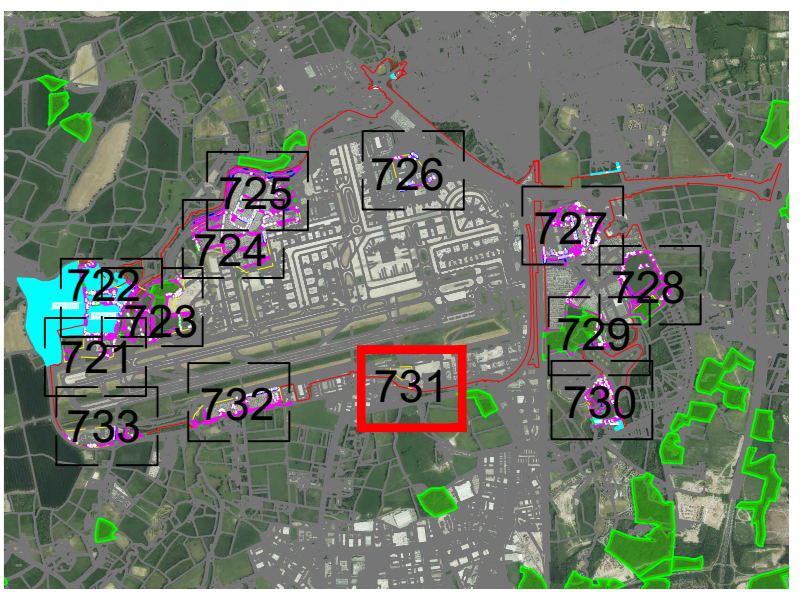


Key

- Red Line boundary.
 - Survey boundary.
 - Tree with numbered reference. Canopy spread and coloured BS5837:2012 tree quality category as shown below.
 - Tree details estimate (inaccessible tree)
 - Tree in off site location
 - Tree group plotted with individual stem locations and numbered reference. Canopy extents coloured to match BS5837:2012 tree quality category as shown below.
 - Tree or Vegetation group with numbered reference. Canopy extents coloured to match BS5837:2012 tree quality category as shown below and dashed line to show indicative stem line.
 - Hedge with numbered reference. Canopy extents and coloured BS5837:2012 tree quality category as shown below and dashed line to show hedge centerline.
 - Woodland with numbered reference. Canopy extents coloured to match BS5837:2012 tree quality category as shown below and dashed line to show indicative tree line.
- BS 5837:2012 Tree Quality Categories - Table 1**
- Category A - High quality
 - Category B - Moderate quality
 - Category C - Low quality
 - Category U - Unsuitable for retention
- Direction of first significant branch
 - Root protection area (RPA). Calculated in accordance with Section 4.6 - BS5837:2012
 - Veteran tree buffer (15 x stem Ø) (as per standing advice produced by Forestry England and Natural England)
 - Tree protected by Tree Preservation Order. Bracketted number reference relates to the TPO Schedule.
 - Designated Ancient Woodland (as per Natural England ancient woodland inventory, via open data publication)
 - Ancient Woodland tree buffer (15m offset) (as per standing advice produced by Forestry England and Natural England)

- NOTES:**
- Refer to RPS Tree Survey Report & Schedule for further details.
 - Survey based on a visual inspection from the ground and is not intended as a full arboricultural inspection.
 - Plan produced in accordance with recommendations set out in BS 5837:2012 - 'Trees in Relation to design, demolition and construction'.
 - Due to the legal protection afforded to breeding birds vegetation removal should not take place during the bird nesting period; generally, although not restricted to, March - August inclusive.
 - Survey based upon Aerial Photography and trees located by eye.

Key Plan



DOCUMENT

Environmental Statement

DRAWING TITLE

**Airport Tree Survey Plans
Appendix 8.10.1
Sheet 11 of 13**

DATE **January 2024**

N ↑	ORIENTATION	DRAWING NO.	REVISION
		731	For ES Issue
	DRAWN BY	PM / CHECKED BY	
	RC	DC	

SCALE @ A0
0m 25m 50m

Reproduced from Ordnance Survey map with the permission of Ordnance Survey on behalf of the controller of Her Majesty's Stationery Office © Crown Copyright (2023). License number 0100031673, 10001998, 100048492.
© Copyright 2023 Gatwick Airport Limited. No part of this drawing is to be reproduced without prior permission of Gatwick Airport Limited.



Key

- Red Line boundary.
- Survey boundary.
- Tree with numbered reference. Canopy spread and coloured BS5837:2012 tree quality category as shown below.
 - Tree details estimate (inaccessible tree)
 - Tree in off site location
- Tree group plotted with individual stem locations and numbered reference. Canopy extents coloured to match BS5837:2012 tree quality category as shown below.
- Tree or Vegetation group with numbered reference. Canopy extents coloured to match BS5837:2012 tree quality category as shown below and dashed line to show indicative stem line.
- Hedge with numbered reference. Canopy extents coloured to match BS5837:2012 tree quality category as shown below and dashed line to show hedge centerline.
- Woodland with numbered reference. Canopy extents coloured to match BS5837:2012 tree quality category as shown below and dashed line to show indicative tree line.

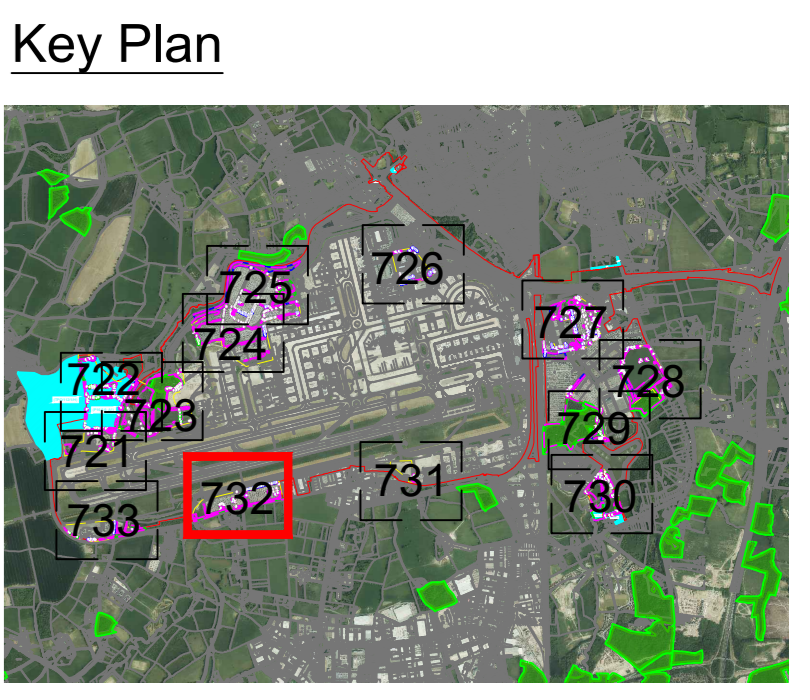
BS 5837:2012 Tree Quality Categories - Table 1

- Category A - High quality
- Category B - Moderate quality
- Category C - Low quality
- Category U - Unsuitable for retention

- Direction of first significant branch
- Root protection area (RPA). Calculated in accordance with Section 4.6 - BS5837:2012
- Veteran tree buffer (15 x stem Ø) (as per standing advice produced by Forestry England and Natural England)
- Tree protected by Tree Preservation Order. Bracketed number reference relates to the TPO Schedule.
- Designated Ancient Woodland (as per Natural England ancient woodland inventory, via open data publication)
- Ancient Woodland tree buffer (15m offset) (as per standing advice produced by Forestry England and Natural England)

NOTES:

- Refer to RPS Tree Survey Report & Schedule for further details.
- Survey based on a visual inspection from the ground and is not intended as a full arboricultural inspection.
- Plan produced in accordance with recommendations set out in BS 5837:2012 - 'Trees in Relation to design, demolition and construction'.
- Due to the legal protection afforded to breeding birds vegetation removal should not take place during the bird nesting period; generally, although not restricted to March - August inclusive.
- Survey based upon Aerial Photography and trees located by eye.



DOCUMENT

Environmental Statement

DRAWING TITLE

**Airport Tree Survey Plans
Appendix 8.10.1
Sheet 12 of 13**

DATE

January 2024

ORIENTATION 	DRAWING NO. 732	REVISION For ES Issue
	DRAWN BY RC	PM / CHECKED BY DC

SCALE @ A0

0m 25m 50m



Key

- Red Line boundary.
- Survey boundary.
- Tree with numbered reference. Canopy spread and coloured BS5837:2012 tree quality category as shown below.
 - = Tree details estimate (accessible tree)
 - = Tree in off site location
- Tree group plotted with individual stem locations and numbered reference. Canopy extents coloured to match BS5837:2012 tree quality category as shown below.
- Tree or Vegetation group with numbered reference. Canopy extents coloured to match BS5837:2012 tree quality category as shown below and dashed line to show indicative stem line.
- Hedge with numbered reference. Canopy extents and coloured BS5837:2012 tree quality category as shown below and dashed line to show hedge centerline.
- Woodland with numbered reference. Canopy extents coloured to match BS5837:2012 tree quality category as shown below and dashed line to show indicative tree line.

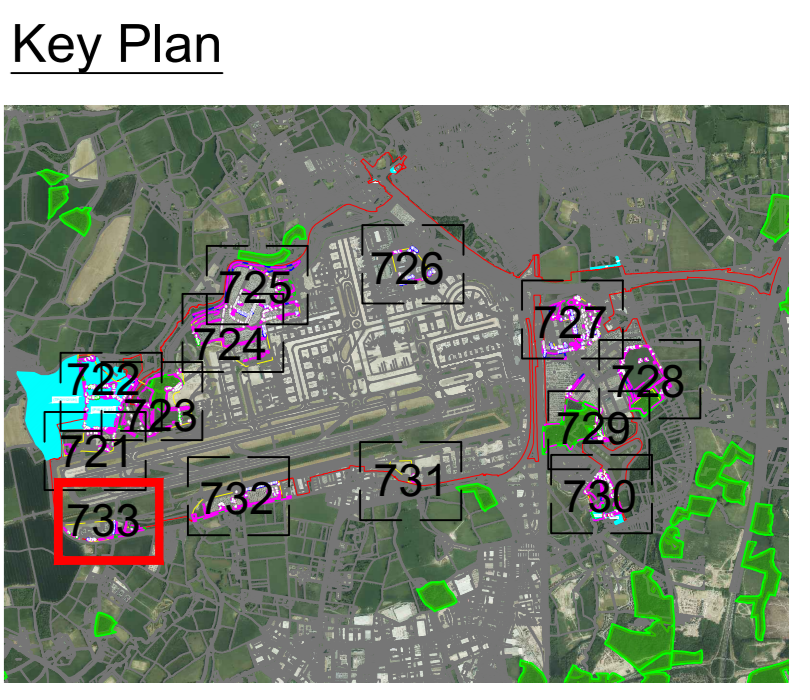
BS 5837:2012 Tree Quality Categories - Table 1

- Category A - High quality
- Category B - Moderate quality
- Category C - Low quality
- Category U - Unsuitable for retention

- Direction of first significant branch
- Root protection area (RPA). Calculated in accordance with Section 4.6 - BS5837:2012
- Veteran tree buffer (15 x stem Ø) (as per standing advice produced by Forestry England and Natural England)
- Tree protected by Tree Preservation Order. Bracketed number reference relates to the TPO Schedule.
- Designated Ancient Woodland (as per Natural England ancient woodland inventory, via open data publication)
- Ancient Woodland tree buffer (15m offset) (as per standing advice produced by Forestry England and Natural England)

NOTES:

- Refer to RPS Tree Survey Report & Schedule for further details.
- Survey based on a visual inspection from the ground and is not intended as a full arboricultural inspection.
- Plan produced in accordance with recommendations set out in BS 5837:2012 - 'Trees in Relation to design, demolition and construction'.
- Due to the legal protection afforded to breeding birds, vegetation removal should not take place during the bird nesting period; generally, although not restricted to, March - August inclusive.
- Survey based upon Aerial Photography and trees located by eye.



DOCUMENT

Environmental Statement

DRAWING TITLE

**Airport Tree Survey Plans
Appendix 8.10.1
Sheet 13 of 13**

DATE

January 2024

ORIENTATION	DRAWING NO.	REVISION
N	733	For ES Issue
	DRAWN BY	PM / CHECKED BY
	RC	DC

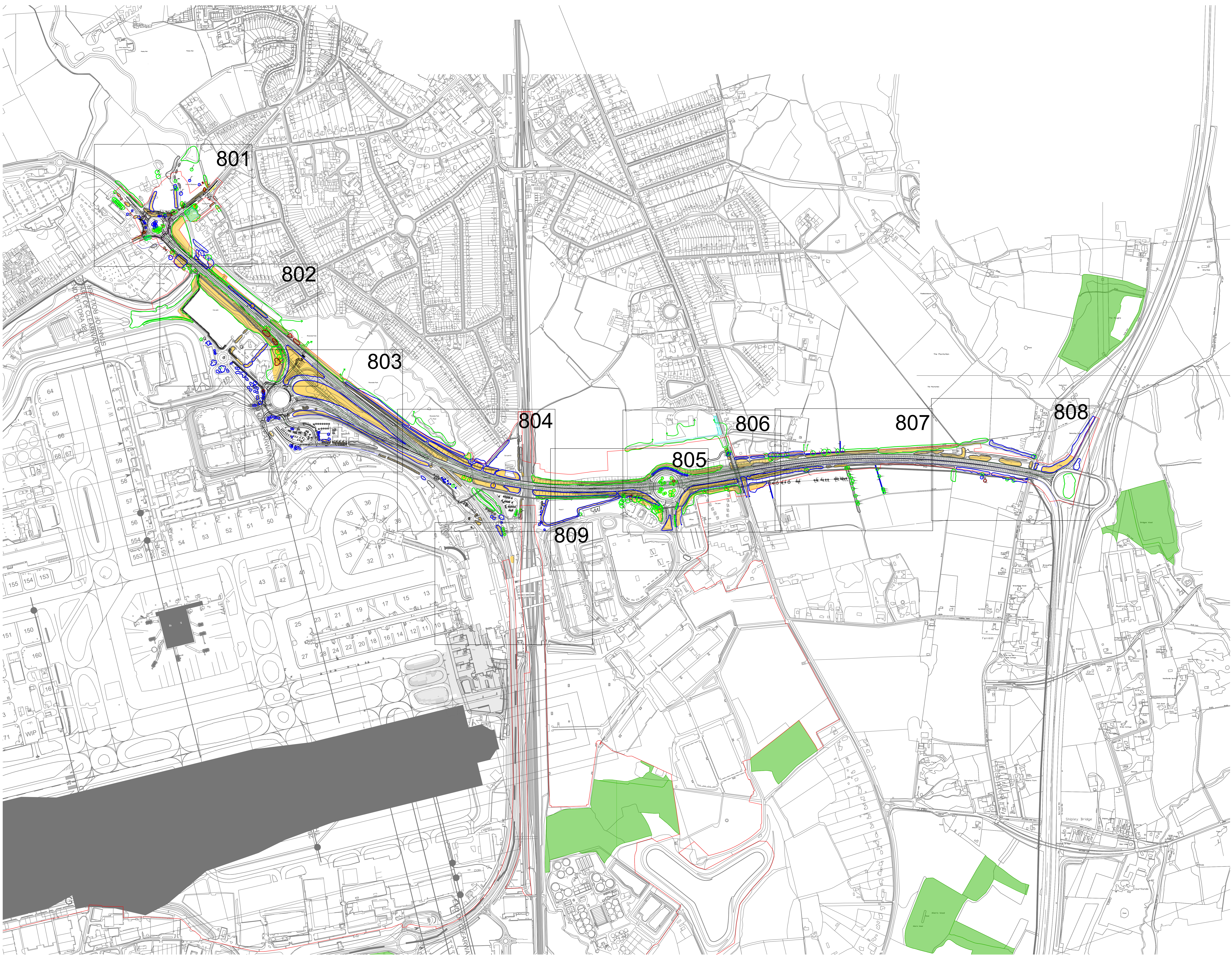
SCALE @ A0

0m 25m 50m

Reproduced from Ordnance Survey map with the permission of Ordnance Survey on behalf of the controller of Her Majesty's Stationery Office © Crown Copyright (2023). License number 0100031673, 10001998, 100048492.

© Copyright 2023 Gatwick Airport Limited. No part of this drawing is to be reproduced without prior permission of Gatwick Airport Limited.

Appendix H
M23 & A23 Preliminary Tree Removal Plans



Legend

- Site Boundary
 - Tree loss required for construction
 - Tree with numbered reference. Canopy spread and BS5837:2012 tree quality category as shown below.
 - T1#
 - Tree off-site with numbered reference. Canopy spread and BS5837:2012 tree quality category as shown below.
 - Vegetation group with numbered reference. Canopy extents and BS5837:2012 tree quality category as shown below.
 - Hedge with numbered reference. Width and BS5837:2012 tree quality category as shown below.
- BS 5837:2012 Tree Quality Categories - Table 1
- Category A - High quality
 - Category B - Moderate quality
 - Category C - Low quality
 - Category U - Unsuitable for retention
- Tree protected by Tree Preservation Order. Bracketted number reference relates to the TPO Schedule.

NOTE:
 • Refer to RPS Tree Survey Report & Schedule for further details.

DOCUMENT
Environmental Statement

DRAWING TITLE
**M23 & A23 Preliminary Tree Removal Plans
 Appendix 8.10.1
 Overview**

DATE
July 2023

N ↑	DRAWING NO. 800	REVISION For ES Issue
	DRAWN BY RC	PM / CHECKED BY DC

SCALE @ A0

Reproduced from Ordnance Survey map with the permission of Ordnance Survey on behalf of the controller of Her Majesty's Stationery Office © Crown Copyright (2023). License number 0100031673, 10001998, 100048492.
 © Copyright 2023 Gatwick Airport Limited. No part of this drawing is to be reproduced without prior permission of Gatwick Airport Limited.